



RIS RETAIL — — INNOVATION SHOWCASE

"Innovative Retail Solutions at Your Fingertips"

Brochure 2023



IMPACT TV

MINI DIGITAL SCREEN

Features

- Story tell with video or looping images, instructional videos or posters
- Suitable for small format stores like pharmacy & supermarkets

Specifications

- Adaptable to horizontal & vertical formats
- Requires power source and wiring at shelf
- Includes Power-Saving mode
- Equipped with motion sensor
- Available in 5" & 7" screens



DIGITAL DIVIDER POP

Features

- Double-Sided Signage with video story telling and sound
- Eye-Catching from a Distance due to the sleek set-up
- Draws shoppers to your category instantly as they enter the aisle

Specifications

- 7-Inch display
- Built-in 1.8GB Memory for heavy video files
- Require power source for wiring at shelf



WIRELESS SCREEN

Features

- Suitable for areas that have difficulty getting to a direct power source Power source can be at a different location to charge the device wirelessly

Specifications

- Wirelessly-Manageable Content via Cloud CMS & Dynamic Messaging
- Provides Rich Data (Aisle Traffic, Message Effectiveness & A/B Testing)



LED SHELF

Features

- Jump out at shoppers with rich content and motion displays
- Command captainship through category visibility

Specifications

- Anti-Collision Screen via GOB Technology
- Waterproof Screen Surface
- Ultra-Thin 21.5mm Design
- Remote-Controllable via WiFi & 4G
- Adaptable Size (based on 150mm/200mm length)
- Content can be connected together as one (Splice Together with No Gaps!)



RFID DISPLAY

Features

- Get your shoppers to interact with different products
- Entertain shoppers with stories of how products are made, using video to respond when they 'pick up' a product with RFID Tags

Specifications

- Requires a customized booth/display and digital screen, actual products tagged with RFID
- Require digital content in MP4 format to display on screen



BHPETROL SCREEN

Features

- Placed outdoor for quicker access to brand promotions in BHP convenience stores
- Engage shoppers with rich media
- Capitalize opportunity for shoppers to buy your product using QR code link for discount coupon

Specifications

- Video or static ad of 15 secs
- Screen size: 1080 (W) x 1920 (H)
- File format: MP4



POSBANNER WITH PENDULUM SWING

Features

- Features motion & interactivity
- Attracts shoppers with swinging motion
- Creates visual interest
- Visually-striking display, stands out against static signage



POSBANNER WITH BUBBLE EFFECT

Features

- Capitalizes on homebay positioning
- Educational & engaging
- Eye-catching LED with bubble effect
- Create sense of movement and liveliness
- Enhance product presentation and making the products more visually appealing



LED VIDEO POSBANNER

Features

- Strengthens brand communication at the homebay
- Able to showcase video content at point-of-sales

Specifications

- Requires power source and wiring
- A point-of-sale material embedded with video
- Option for running (sequential) LED to highlight a brand's USP



CUSTOMISED HOME SHELF

Features

- Dominant product presence
- Visually-enhanced product branding
- Highlighting product placement & visibility
- Eye-catching LED effects



TOKINOMO

Features

- Breaks Clutter & Stands Out In-Store
- Create Brand Awareness for new product launches
- Accelerates Brand Adoption through delight and surprise element
- Proven Sales Impact & Long-Term Tangible Benefits
- Features Motion, Sound & Light Effects



MOTION DISPLAY

Features

- Battery life 12 months or longer
- Easy & Secure shelf attachment
- Durable, Lightweight & Dependable
- Customizable Size & Shape (flexible design)
- Strong Track Record of increased sales



LIGHTED SHELF EXTENDER

Features

- Shopper navigation aid
- Provides additional stock weight
- Customizable by product
- Engaging LED effects
- Contrasts competitor's color block



XTRIKE ROBOTICS BELLABOT

Features

- Attract attention with a digital brand ambassador
- A roving sales and promotion rack with an advertising screen display
- The Screen can be used for shopper engagement (via survey, scan QR code for action)

Specifications

- Large capacity 4-Layer induction tray
- Replaceable battery
- Functions 8 hours straight
- Multimodal interaction
- Intelligent lattice screen



XTRIKE ROBOTICS KETTYBOT

Features

- Attract attention with a digital brand ambassador
- A roving sales and promotion rack with an advertising screen display
- Bigger screen than the BellaBot

Specifications

- Walking Ad Display with 18.5" Screen
- Easy deployment & versatile all-rounder
- Functions for 8 hours straight
- Multiple applicable scenarios



POWER WING

Features

- Enhanced product visibility
- Strategic product placement
- Encourages impulse purchase & creates opportunities for upselling
- Drives shopper engagement at cross-category section via product banner
- Media format with additional stock weight



EXPERIENTIAL STANDEE

Features

- Modular and Re-usable Structure
- Change décor and POSM to suit campaign needs

Specifications

- Get shoppers to spend more by highlighting category specific or occasion induced spending (ie., Breakfast moments, festive seasonal items, sporting seasons)
- Dress up in a 'BIG' way using the standee structure and capitalize on different textures and display formats (POSM to screen)



3D FLOOR PROJECTOR

Features

- 3D imagery projected onto the retail floor
- Create interest in the brand with game or visual as shoppers enter the store
- Attention-Grabbing in Crowded Environment

Specifications

- Require power source, fixed to a structure or ceiling slab to carry the weight of projector (10kg)



IMPACT TV HANGING LCD SCREEN

Features

- Story telling through video or images.
- Grab attention before shoppers enter the intended category aisle

Specifications

- Slim Double-sided LCD Screen (only 20mm thickness)
- Built-in Player App
- Ability to Remotely Change Content with WiFi



IMPACT TV INDOOR SIGNAGE

Features

- Upgrade your banner ad with a digital signage at store front or within a shopping zone, with a 'call-to-action' message
- Simple to install and operate

Specifications

- Full HD 40-Inch Signage with Motion Sensor
- Expandable Image View & Better Visibility
- Update Contents via USB
- Features Timer Settings



LIGHTBOX FRAME

Features

- Create an attractive brand display at events and in retail space
- Make your bunting sexier with motion and light

Specifications

- Plug & Play Connecting System
- Double Sides Lighting Box
- Lit Inner Wall Panels (Motion Display)
- Patented Toolless & Cordless System
- Toolless Assembly: “From Box-to-Light-Box” in 3 Minutes!
- Able to combine into Multi-Display Wall
- ABS Trolley Case



LED GONDOLA END

Features

- Attracts shoppers through LED lighting
- Products appear visually-striking
- Targets specific customer segments & promotes seasonal items
- Opportunities for cross-selling
- Encourages impulse purchases



3D HOLOGRAM

Features

- Generates nice 3D effect
- Works best doors and also functions outdoors with a protection cover

Specifications

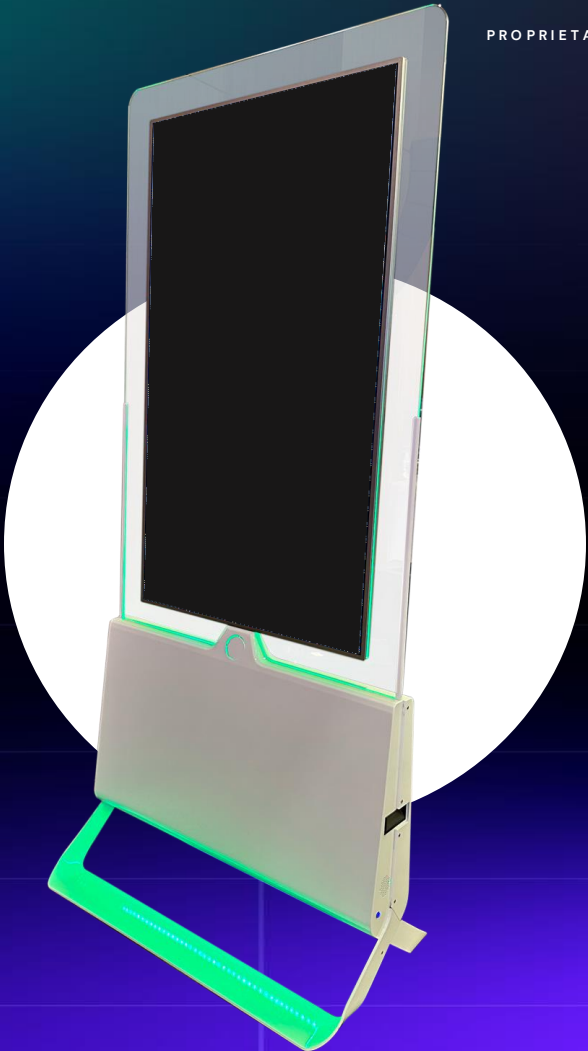
- Software compatible with Windows XP/Window7/Windows 8/Windows10
- Upload content via SD card
- Content format: mp4,avi, rmvb, gif, jpg, png
- Size 420*130*110mm
- Weight 1.5 kg





Powered by *Gazelle*
ACTIVATION

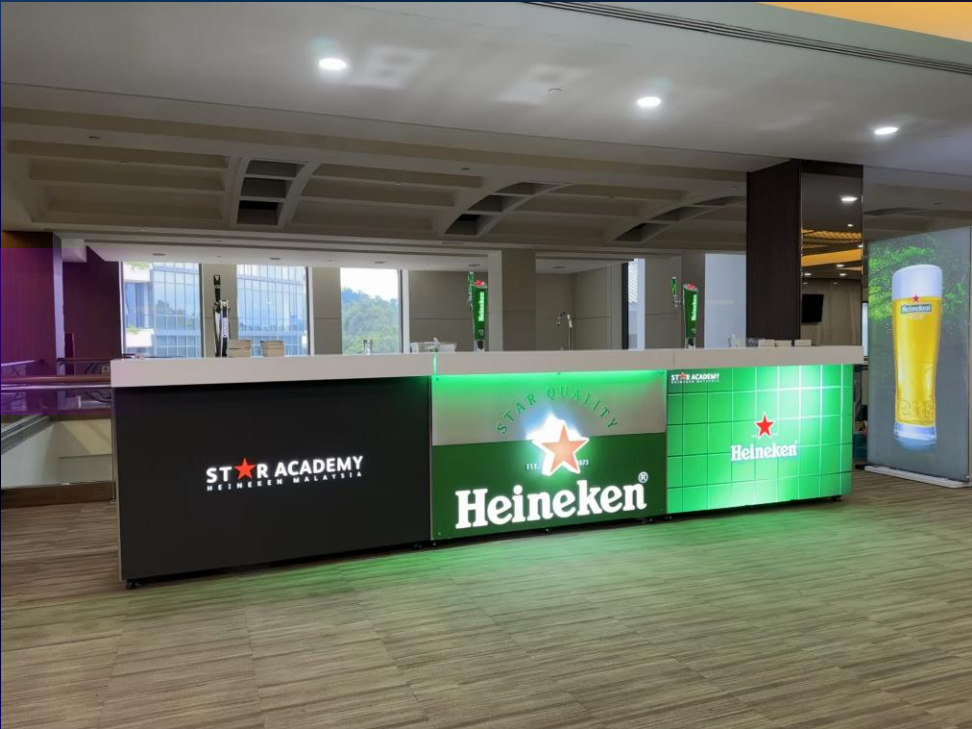
*DOUBLE SIDED
TOUCH SCREEN*



RIS RETAIL
— INNOVATION
SHOWCASE

Powered by *Gazelle*
ACTIVATION

HEINEKEN LED BAR





Let's connect!



Kelvin Cheong

kelvin.cheong@posad.com.my
+60 12-914 1287

Claire Hoh

claire.hoh@posad.com.my
+60 12-838 9163



Craig M Lee

craig.lee@shopper360.com.my
+60 12-202 3597

Danial

danial@gazelle.com.my
+60 14-944 2649

Shopper360 Sdn Bhd
505 5th Floor, Block A Phileo Damansara 2,
15 Jalan 16/11, 46350 Petaling Jaya, Selangor
Darul Ehsan Malaysia.
+603 7890 5050



Omnichannel Shopper Engagement & Conversion

WONDERLAH

A customisable shopper engagement platform by **shopper+**

What is Wonderlah?

- Omnichannel shopper engagement & conversion platform
- Gamified brand experience thru Quest/Mission
- Educate & Engage via brand video, games & quizzes
- Convert & Continue via contest, competition, loyalty & redemption
- Build community thru social interaction

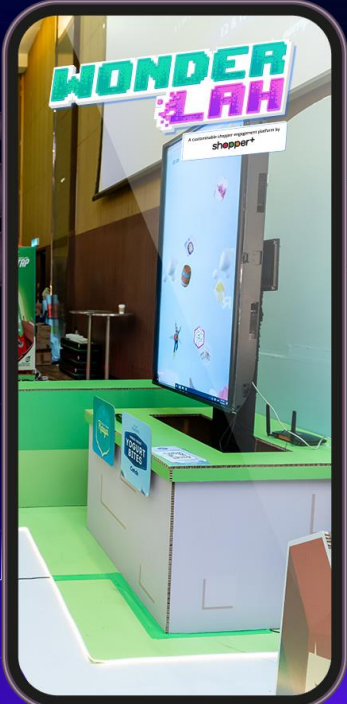
Demo



<https://youtu.be/upHDsDy3QpA>



https://youtu.be/9kelaqlAG_M



Let's talk!

shopper+

Jun Ling

jl.lee@shopperplus.com.my
+60 12- 380 7751

Sue Lynn

suelynn.ong@shopperplus.com.my
+60 12- 307 3428

Yih Mun

ym.wong@shopperplus.com.my
+60 12- 300 0845

Lok Wei

lw.tham@shopperplus.com.my
+60 16- 619 6618

Zaqer

zaqermahadi@shopperplus.com.my
+60 19-305 3236

ShopperPlus Sdn. Bhd.

505 5th Floor, Block A Phileo Damansara 2,
15 Jalan 16/11, 46350 Petaling Jaya, Selangor
Darul Ehsan Malaysia.
+603 7890 5050

INTERACTIVE VENDING MACHINE

Powered by  **TRISTAR**
SYNERGY



INTERACT

The shopper connects to a virtual promoter for more info on the products.



PLAY

The shopper plays fun interactive games.



WATCH

The shopper watches branded videos.



REDEEM

After completing each activity, the shopper can redeem a reward directly from the vending machine.



SENSORIAL EXPERIENCE

Powered by  **TRISTAR**
SYNERGY



TOUCH

The shopper interacts with the display by lifting up the funnel. They can also browse the products on display.



SMELL

The funnel allows shoppers to smell the fragrance of the variant.



SIGHT

The lifting of the funnel triggers light panels to change and reflect the chosen variant while the LED strips & screen plays content to promote product benefits.



SOUND

Audio or music also plays when the funnel is lifted.





Let's talk!



Angelina Ooi
angelina@tristarsynergy.com
+60 17- 878 2191

Yamada Jian Zhong
yamada@tristarsynergy.com
+60 14- 964 0146

Marcus Foong
marcus@shopperplus.com.my
+60 16- 234 1138

Horatio Kua
wl.kua@tristarsynergy.com
+60 19- 261 2664

Crist Wong
cris@tristarsynergy.com
+60 12-988 0325

Darryl Leong
darryl@tristarsynergy.com
+60 12-420 5530



Leading Retail Field Force Management & Data Solutions





The leading retail field force management provider in Malaysia.

We help you boost your in-store marketing operations with our retailer partners.



Field Force Operations Management

- Retail Merchandising
- In-store display / setup
- POSM storage / strategic allocations
- Talent Management



Employment Management

- Talent Acquisition
- Outsource Payroll & HR support



Shared Merchandising Services

- Key Account
- 99 Speedmart
- Pharmacy
- Convenience store



Task Force

- Audit Compliance
- Display setup / dismantle
- Inventory count
- Mystery Shopper



Reporting Solution

- Digitalized merchandising data collection system (FFAS)
- Real-time information & ground reports (BI) for better planning

Avinity Analytics Data Solutions



1. Data Infrastructure

- Data Environment Assessment
- Data Architecture Design
- Data Pipeline Development
- Data Processing Optimisation



2. Data Management

- Data Accuracy Optimisation
- Data Modelling & Transformation
- Data Management & Maintenance



3. BI Dashboards

- Reporting Dashboards
- Execution Dashboards
- Exploratory Dashboards



4. Data Analysis

- Trend Analysis
- Root Cause Analysis
- Comparative Analysis
- Cohort Analysis



5. Data Governance

- Data Discoverability
- Data Security
- Data Accountability



6. Ai Solutions

- Prediction
- Recommendation Engines
- Automated Insights
- Anomaly Detection



Let's talk!



Phoebe Cheong
phobe.cheong@jumpretail.com
+60 12- 286 6729

Claudine Lee
claudinelee@jumpretail.com
+60 12-281 0980

JUMP RETAIL SDN BHD
609 6th Floor
Block A Phileo Damansara 2,
15 Jalan 16/11, 46350 Petaling Jaya, Selangor
Darul Ehsan Malaysia.
+603 7890 5050

Pang Eileen
eileen@jumpretail.com
+60 17- 317 7821

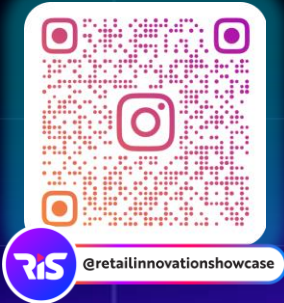
Mandy Lee
mandy.lee@jumpretail.com
+60 12-633 3092



THANK YOU!

Scan & follow us

*on Instagram
for latest update*



*on website
for more information*

